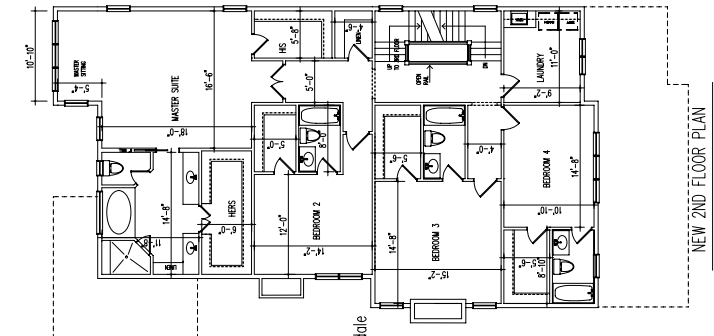


4/27/2011

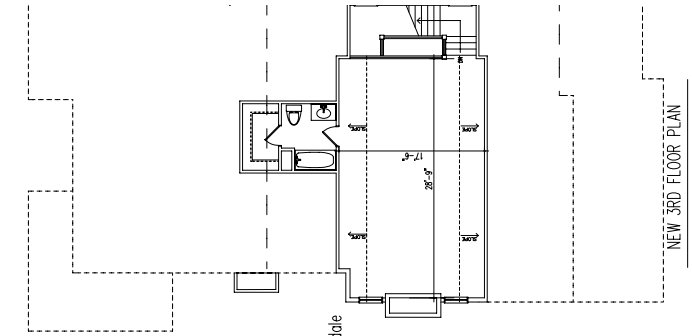
WILLIS  
BARKSDALE  
SQUARE FEET  
1ST FLOOR 1994'  
2ND FLOOR 2005'  
3RD FLOOR 631'  
C:\d\WILLIS\Barksdale

NEW MAIN FLOOR PLAN



NEW 2ND FLOOR PLAN

011  
A/E  
E FEET  
1994'  
2005'  
631'  
JLJ\Barksdale



NEW 3RD FLOOR PLAN

011  
A/E  
E FEET  
1994'  
2005'  
631'  
JLJ\Barksdale

## COMPLETE RECONSTRUCTION

Located on Ansley's coveted Winn Park, this complete reconstruction/expansion by John Willis Homes includes flowing floor plan with 10' ceilings, well-appointed kitchen & breakfast area open to family room, master suite with luxury bath & separate his/her closets.

41 BARKSDALE DRIVE  
ANSLEY PARK

Offered for \$1,849,000

- 5 Bedrooms, 6.5 Baths
- Expansion with flowing floor plan
- Exterior living space w/ fireplace
- Winn Park location
- Deep, private backyard

## Getzinger Group

3290 Northside Parkway NW Suite 200  
Atlanta, Georgia 30327 404-237-5000

Jim Getzinger  
#1 Ansley Park Agent 2010  
404.307.4020  
www.GetzingerGroup.com

© MMXI Sotheby's International Realty Affiliates LLC. A Realogy Company. All Rights Reserved. Sotheby's International Realty® is a registered trademark licensed to Sotheby's International Realty Affiliates LLC. An Equal Opportunity Company. Equal Housing Opportunity. If your property is listed with a real estate broker, please disregard. It is not our intention to solicit the offerings of other real estate brokers. We are happy to work with them and cooperate fully.



41 BARKSDALE DRIVE  
Ansley Park

Atlanta Fine  
Homes

Sotheby's  
INTERNATIONAL REALTY